

FINAL REPORT HIGHLIGHTS

# Mosaic of Marks, Words, Material Exhibition + *Atelier*

Albuquerque, New Mexico | 2024



# Community Overview

HOSTED BY

**New Mexico Reggio Emilia Exchange &  
Collaborative Teachers Institute**

## New Mexico Reggio Emilia Exchange (NMREX)



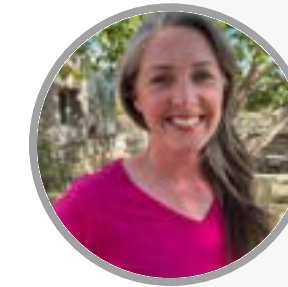
NMREX envisions a future where every child, regardless of culture or identity, has equitable access to education that respects their rights, voices, and inherent abilities. NMREX strengthens the presence of the Reggio Emilia Approach in New Mexico by tailoring it to the unique needs of local communities. Through professional development opportunities, advocacy efforts, and networking, NMREX equips aspiring and practicing educators with the tools to implement child-centered, rights-based educational practices. Guided by its mission to elevate the Reggio Emilia Approach in culturally authentic ways, NMREX serves as a vital resource for educators, families, and policymakers alike.

## Collaborative Teachers Institute (CTI)



Established in 2014, the CTI is a community of early childhood educators and advocates in New Mexico dedicated to interdisciplinary, aesthetic, and reflective teaching practices. Its members include classroom teachers, parents, program directors, and educators from arts, museums, and nature-based programs, all united by their commitment to the interests and rights of young children, families, and educators. CTI leverages the principles of pedagogical documentation to uncover and highlight the complex creative processes of children and educators, fostering learning experiences that are meaningful and inclusive. Rooted in the Reggio Emilia Approach, CTI empowers local educators and families to create transformative educational environments.

## Working Group



**Sarah McKinney**  
Explora Science Center and  
Children's Museum of Albuquerque



**Gigi Yu**  
University of New Mexico

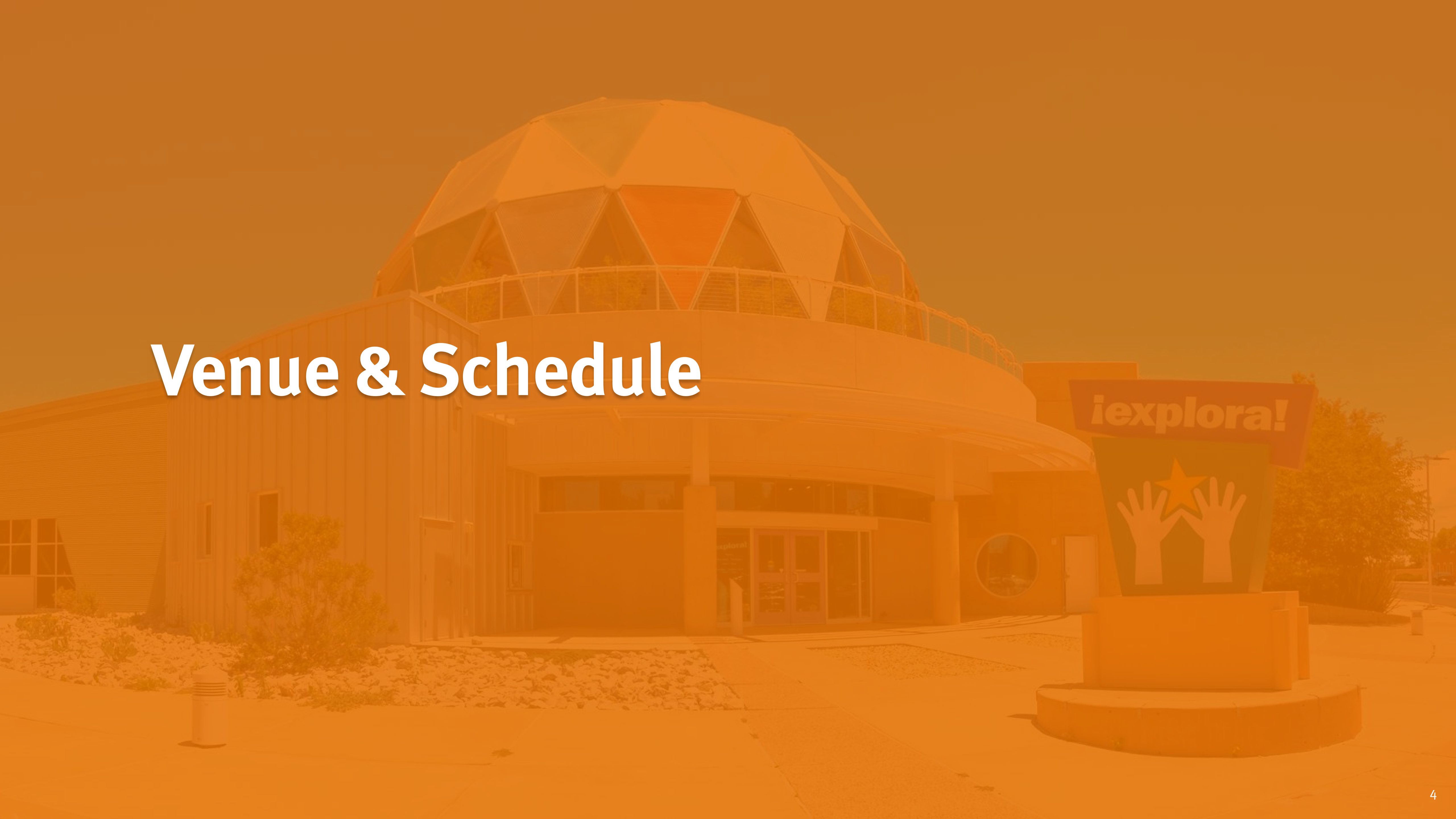


**Baji Rankin**  
Excellence and Equity in Early  
Childhood Education



**Pam Remstein**  
University of New Mexico-Taos

# Venue & Schedule



# Explora Science Center and Children's Museum

May 15 – August 16, 2024

General Admission Visitors

**70,120<sup>+</sup>**



“

The Reggio Emilia Approach is also fabulously compatible with exploration and play-based children’s museum spaces and programs. Explora learned so much by hosting the *atelier* and the exhibition, and we have already implemented more materials for artistic expression in the exhibit that followed *Mosaic of Marks*.

Final Report Excerpt

# 20th NAREA Summer Conference

*Advocating for the 100 Languages as an Educational Right for Children, Families, and Educators*

**June 27–29, 2024**

### Speakers



**Marina Castagnetti**  
Teacher



**Isabella Meninno**  
*Atelierista*

Participants

**294**

States

**25**

Provinces

**2**

Countries

**3**



Albuquerque, New Mexico

“

Overall, 294 people from three different countries and 25 different states attended the NAREA Summer Conference in Albuquerque. In addition to offering a unique professional development opportunity to learn from Reggio educators, one of the greatest successes of the conference was the collaboration with local experts and advocates, as well as the opportunity to uplift the expertise of New Mexicans.

Final Report Excerpt

# Professional Learning

# Mark-making Workshops, Documentation Workshop, & Summer Institute



“

Another outcome of this project was the incredible opportunity it provided for advocacy. In addition to the community members, families, and children who experienced the words, images, and values of the Reggio Emilia Approach while the exhibit was in New Mexico, we hosted a visit in July with Secretary Groginsky and nine members of the Early Childhood Education and Care Department’s leadership team. We studied the exhibit in small groups and then engaged in discussions about inspiration and possibilities for practice and policy in New Mexico early childhood education, strengthening our relationships with the Secretary and her staff while fostering a robust exchange of ideas.

Final Report Excerpt

# Support



# Supporters of the Project

Thanks for making this possible.

- **W.K. Kellogg Foundation**
- **New Mexico Early Childhood Education and Care Department**
- **New Mexico Arts Grant through UNM's Art Education Department**
- **Brindle Foundation**
- **New Mexico Reggio Emilia Exchange**
- **Collaborative Teachers Institute**
- **Reggio Children**
- **NAREA**



Secretary Groginsky and New Mexico Early Childhood Education and Care Department staff.

# Significance

“

We are especially proud of all the scholarships we were able to coordinate. We supported access to this opportunity for New Mexicans, which will influence educators across the state. We were also particularly invigorated about the opportunities to connect with other early childhood professionals and advocates throughout the state. The collaboration among educators, artists, museums, and policy makers throughout the initiatives promoted lasting and ongoing relationships for future early childhood opportunities.

As we reflect on this project, we are thinking about the challenges of implementing some of these practices, especially documentation and curriculum development, given the constraints of the day-to-day childcare work. No program that we know of is able to fund an *atelierista* position, and in most programs, there is little time for teachers to engage in collaborative curriculum development and little capacity on the leadership team to facilitate such practice.

Final Report Excerpt



