

Mosaic of Marks Exhibit Condition Report
Vancouver, BC
Vancouver Reggio Association
September 24, 2022
DRAFT

Laurie Kocher, Ron Kocher were at the Italian Cultural Centre to receive the exhibit at 9:30am from Salmon's Moving and Transfer Company. Angela Meredith, Gina Wong, and Janice Novakowski (from VRA) arrived shortly afterwards.



The two-man moving crew from Salmon's were fabulous. Their truck was parked in a quiet area at the side of the ICC parking lot. The crate was put onto the lift gate and straightforwardly lowered to the ground. The men, equipped with their own tools, easily opened the crate. A quick visual inventory was made by Laurie.



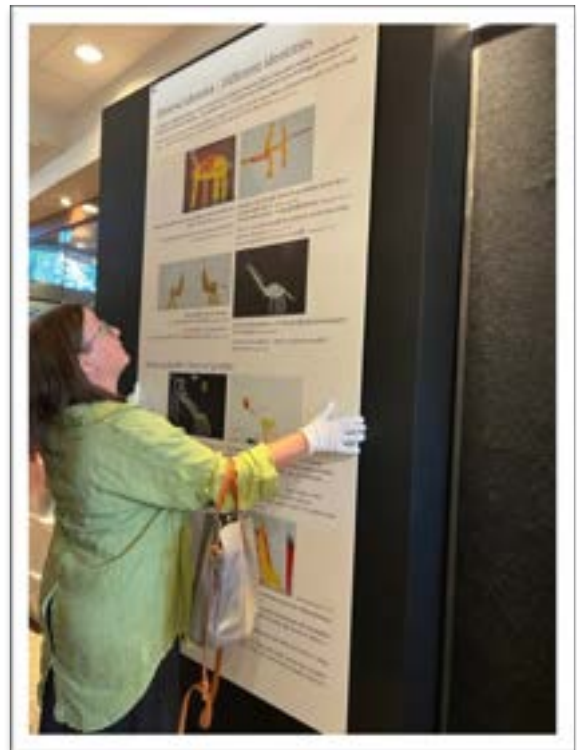
It was not possible to move the crate readily to the museum space, so the contents were removed from the parking lot by Salmon's crew and moved to the museum space for assessment. VRA members present assisted. [The installation into the museum has been delayed by a week due to a scheduling error by the museum. The exhibit materials will be temporarily stored in the board room and then into the exhibit space in the museum on Saturday, October 1.]



Once materials were located in the museum, the inventory list included in the crate was reviewed to ensure that all contents had been received. No thumb drives/videos were found, but they were also not included on the inventory list. [We will have to return to the ICC to see if they are in the boxes holding the TV monitors.]

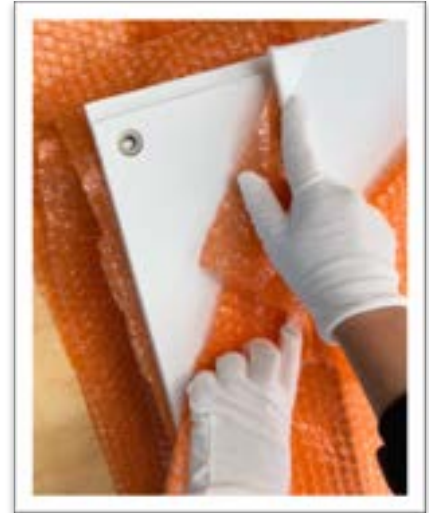


We tested a hanging solution for the panels recommended by Angela Clarke, museum curator.



Using these “S” hooks should work on most of the moveable walls in the museum. They are very easy to use and appear to be very stable once panels are hung.

All materials appear to be in good order, with the exception of a modest scuff on the side of the crate and a couple of minor dings on several of the exhibition panels. These were likely present prior to arrival and related to regular wear and tear. One of the television stands shows a patch of rust (see images below).



Scuffs on crate.



Rust on TV stand.



Panel blemish (wear and tear?)

Panel blemish (wear and tear?)



Many of the plastic corner protectors had come loose from the panels. We are not sure if these are to be used for shipping, or to be placed on the panels while on exhibit. **Please advise.**

Later in the week we will unpack and test the television screens, and **perhaps find the data sticks there.** We have discovered an osteria on site to have lunch ☺

